
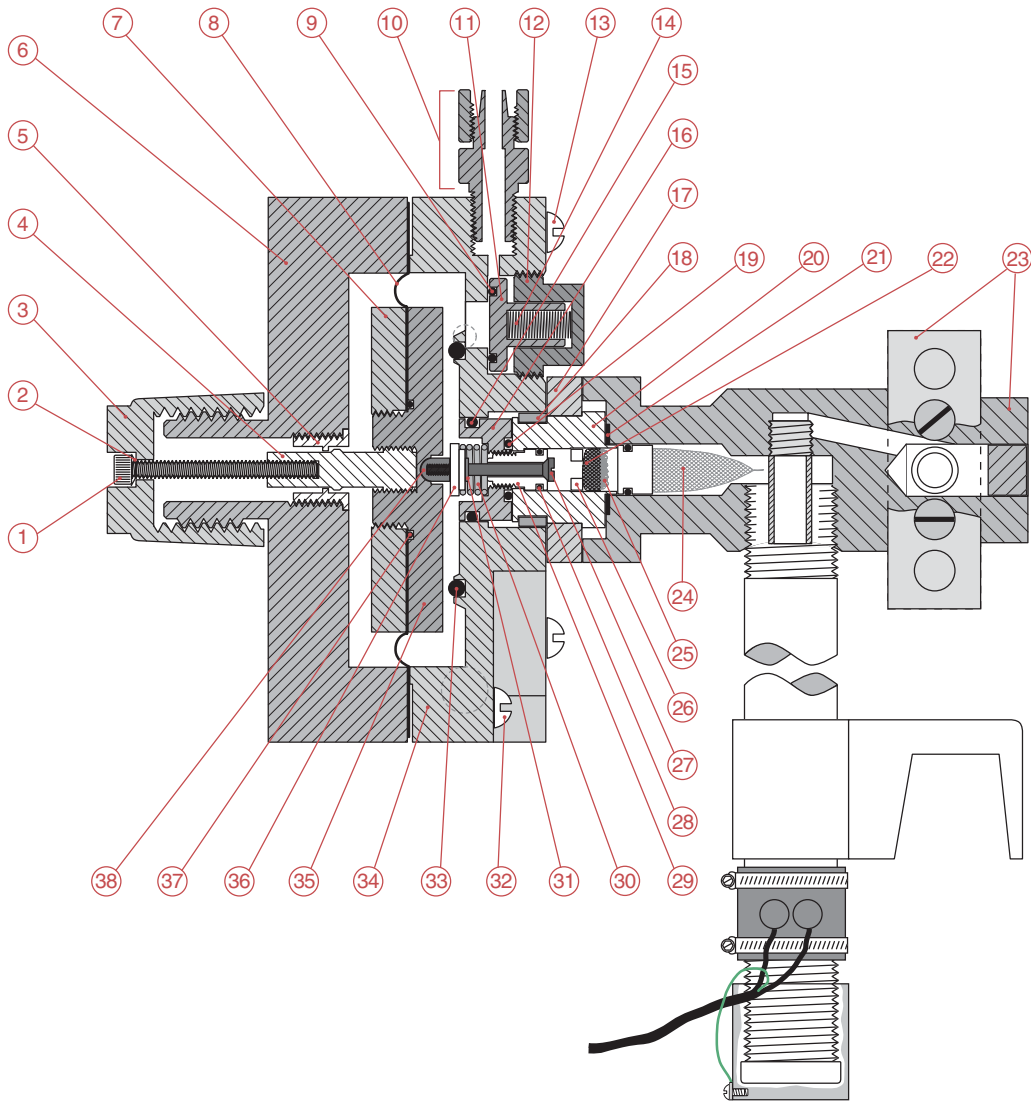



Item No.	Part No.	Description	Qty.	Item No.	Part No.	Description	Qty.
1	BTH-511-500	10-24 x 2" Socket Head Cap Screw	1	22	VRH-101-500	Inlet Screen	1
2	KW-900	Kynar Washer	1	23	VRH-455-500	Filter Floss	1
3	VRH-541-500	Vacuum Reset Knob	1	24	VRH-184-500	Filter Stop	1
4	VRH-546-500	Guide Pin	1	25	VRH-112-500	Inlet Valve	1
5	VRH-545-500	Collar	1	26	OH-VIT-011	O-Ring	1
6	VRH-555-500	Front Body	1	27	VRH-110-500	Valve Seat	1
7	VRH-269-500	Diaphragm Front Plate	1	28	SPH-104-100	Inlet Spring	1
8	DIH-106-500	Diaphragm	2	29	VRH-113-500	Spring Holder	1
9	OH-VIT-114	O-Ring (Vent Valve)	1	30	BTH-STA-124	1/4 - 20 x 1 3/4" Bolt	1
10	TCH-100-100	Vent Tubing Connector (3/8")	1	31	OH-VIT-332	O-Ring	1
11	VRH-521-500	Vent Cup	1	32	VRH-556-500	Back Body	1
12	VRH-522-500	Vent Cap	1	33	VRH-547-500	Diaphragm Back Plate	1
13	BTH-STA-129	1/4 - 20 x 2 1/4" Bolt	4	34	VRH-183-500	Spring Retainer	1
14	SPH-520-000	Vent Spring	1	35	OH-VIT-028	O-Ring	1
15	OH-VIT-212	O-Ring	1	*	BTH-STA-125	1/4 - 20 x 2 3/4" Bolt	2
16	VRH-182-500	Seal Plug	1	* - Not shown.			
17	VRH-346-500	Yoke Assembly	1	 VACUUM REGULATOR			
18	VRH-142-500	Retainer Clip	1				
19	OH-VIT-112	O-Ring	1				
20	VRH-141-501	Inlet Capsule	1				
21	VRH-111-500	Vent Plug	1				
				hydro INSTRUMENTS™		Date:	August 2004
						Scale:	67%
						Dwg. No.	900VR



Item No.	Part No.	Description	Qty.	Item No.	Part No.	Description	Qty.
1	BTH-511-500	10-24 x 2" Socket Head Cap Screw	1	24	VRH-126-500	Filter	1
2	KW-900	Kynar Washer	1	25	VRH-455-500	Filter Floss	1
3	VRH-541-500	Vacuum Reset Knob	1	26	VRH-184-500	Filter Stop	1
4	VRH-546-500	Guide Pin	1	27	VRH-112-500	Inlet Valve	1
5	VRH-545-500	Collar	1	28	OH-VIT-011	O-Ring	1
6	VRH-555-500	Front Body	1	29	VRH-110-500	Valve Seat	1
7	VRH-269-500	Diaphragm Front Plate	1	30	SPH-104-100	Inlet Spring	1
8	DIH-106-500	Diaphragm	2	31	VRH-113-500	Spring Holder	1
9	OH-VIT-114	O-Ring (Vent Valve)	1	32	BTH-STA-124	1/4 - 20 x 1 3/4" Bolt	1
10	TCH-100-100	Vent Tubing Connector (3/8")	1	33	OH-VIT-332	O-Ring	1
11	VRH-521-500	Vent Cup	1	34	VRH-556-500	Back Body	1
12	VRH-522-500	Vent Cap	1	35	VRH-547-500	Diaphragm Back Plate	1
13	BTH-STA-129	1/4 - 20 x 2 1/4" Bolt	4	36	VRH-183-500	Spring Retainer	1
14	SPH-520-000	Vent Spring	1	37	OH-VIT-028	O-Ring	1
15	OH-VIT-212	O-Ring	1	38	VRH-111-500	Vent Plug	1
16	VRH-182-500	Seal Plug	1	* BTH-STA-125	1/4 - 20 x 2 3/4" Bolt	2	
17	VRH-739-500	Ton Back Plate	1	* - Not shown.			
18	VRH-142-500	Retainer Clip	1	 Date: August 2004 Scale: 50% Dwg. No. 900VRT			
19	OH-VIT-112	O-Ring	1				
20	VRH-141-501	Inlet Capsule	1				
21	GAH-LED-11T	Lead Gasket (Ton)	1				
22	VRH-101-500	Inlet Screen	1	VACUUM REGULATOR			
23	VRH-738-500	Ton Inlet Assembly with Yoke and Bolts	1				