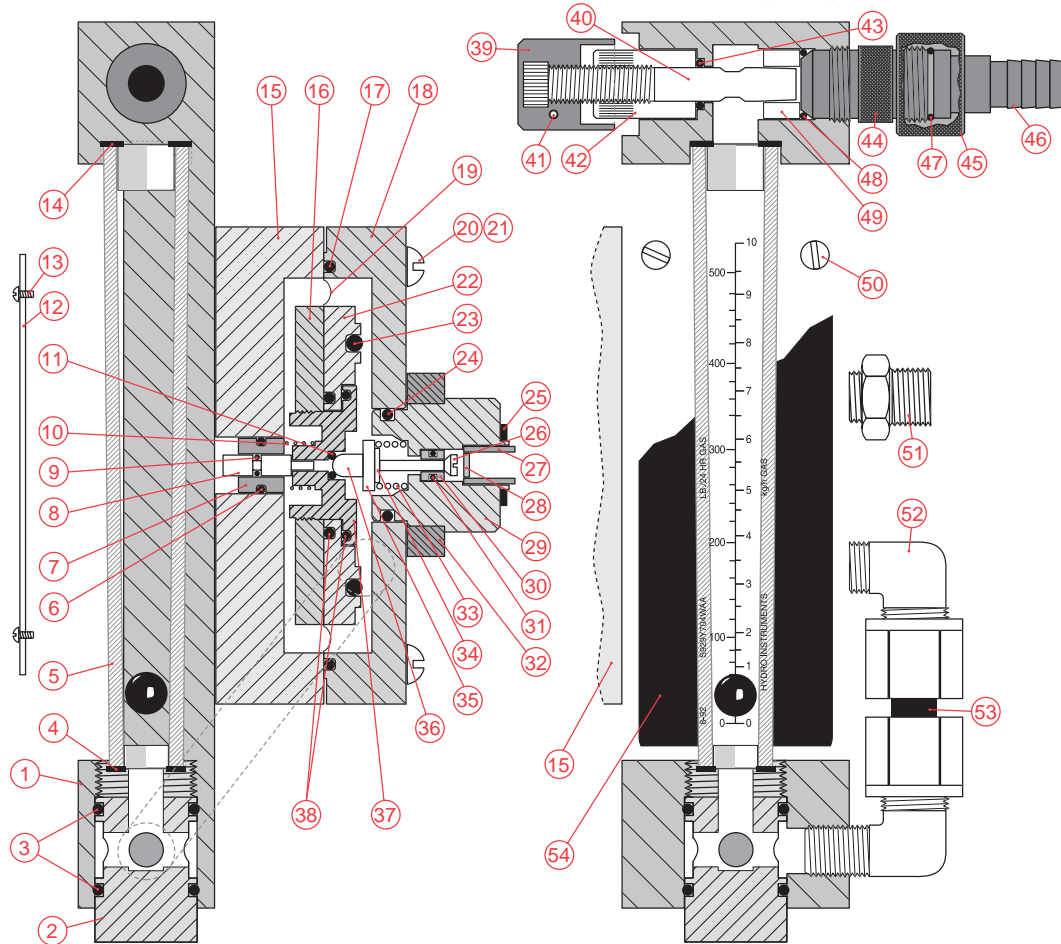


**SIDE VIEW**

**FRONT VIEW (Partial)**



**Note: See IW-1★ drawing for ironwork parts.**

Item No.	Description	Quantity	Part No.	Item No.	Description	Quantity	Part No.
1	Flow Meter Body	1	TFM-500	31	O-Ring	1	3RS-010
2	Inlet Plug	1	IP-498	32	Back Plate	1	YM-105A
3	O-Rings	2	3RS-212	33	Inlet Spring	1	YM-103
4	Bottom Meter Gasket	1	G-162	34	Bearing Washer	1	YM-101A
5	Flow Meter Tube	1	MT-678	35	Spring Retainer	1	YP-100
6	O-Ring	1	3RS-014	36	Vent Plug	1	YM-102A
7	Pin Guide	1	FB-104	37	Diaphragm Vent Bolt	1	DP-102A
8	Guide Pin	1	DM-101A	38	O-Rings	2	3PS-029
9	O-Ring	1	3RS-006	39	Rate Valve Knob	1	S496
10	Vent Spring	1	DM-100	40	Rate Valve	1	SA495
11	O-Ring	1	3RS-009	41	Rate Valve Knob Set Screw (stainless)	1	#6-32 x 5/16"
12	Face Plate	1	FB-105-700	42	Valve Bonnet	1	S493
13	Cover Plate Screws (Nylon)	2	#6-32 x 5/16"	43	O-Ring	1	3RS-203
14	Top Meter Gasket	1	G-161	44	Rate Valve Seat Retainer	1	S494
15	Front Body	1	FB-5A	45	Knurled Fitting (nut)	1	EJF-2
16	Front Diaphragm Plate	1	DP-100A	46	Gray Tubing Connector	1	EJF-3
17	O-Ring	1	3PS-156	47	O-Ring	1	3RS-114
18	Back Body	1	BB-5A	48	O-Ring	1	3RS-114
19	Double Diaphragm	1	DP-103	49	Rate Valve Seat	1	S497
20	Body Screws (Monel)	4	1/4-20 x 1 1/2"	50	Panel Screws (Monel)	4	#10-24 x 1 1/2"
*21	Back Plate Screws (Monel)	2	1/4-20 x 1 7/8"	51	Vent Fitting (3/8")	1	F-104
22	Rear Diaphragm Plate	1	DP-101A	52	1/2" Tube x 3/8" NPT Male Elbow	2	40-8-6
23	O-Ring	1	3PS-332	53	500 PPD Tube Connector	1	FB-106-500
24	O-Ring	1	3PS-214	54	Meter Shield	1	MS-700
25	Lead Gasket	1	LG-100	* - Not shown.			
26	Inlet Valve	1	YM-100A				
27	Filter Holder	1	KFH-200				
28	Silver Screen & Hat	1	S-275				
29	Seal Adapter	1	SAWS				
30	Inlet Valve Seat	1	YP-101A	 <b>Date:</b> December 2002 <b>Scale:</b> 49% <b>VACUUM REGULATOR</b> Dwg. No. Series 750★			